

SIMPLE LIFE

SIMPLE LIFE



## St Bees Close, Brookfield Vale, Blackburn

£1,065 PCM

Simple Life Homes are thrilled to be delivering a spectacular collection of two, three and four bedroom homes at Brookfield Vale. Located in Blackburn, Brookfield Vale is situated on top of the largest hills in the area, offering desirable views of the Pennines and a good mix of urban & rural living.

The Trent is a well-proportioned double fronted home. Upon walking through the door you will find a large living room to one side and a large open plan kitchen / dining room to the other. Both of these spacious rooms also benefit from an abundance of natural light due to the French windows leading on to your own private garden. You will also find a handy WC downstairs.

Upstairs the master bedroom offers a lovely space to relax, spanning the side of the property. The master bedroom also comes with fitted, mirrored wardrobes. Along the hall you will find another double bedroom, single bedroom and full bathroom suite, with separate bath and shower, as well as a storage cupboard to keep everything neat and tidy. The Trent is the perfect home for growing families looking for a traditional home with a fantastic layout.

This development is just one mile away from the town centre, providing plenty of options for shopping and leisure. For those who love to shop, 'The Mall' in Blackburn town centre has numerous high street shops and restaurants. Other local facilities include Tesco Superstore, Lidl, Tenpin Bowling, Planet Ice Arena and Blackburn Rovers.

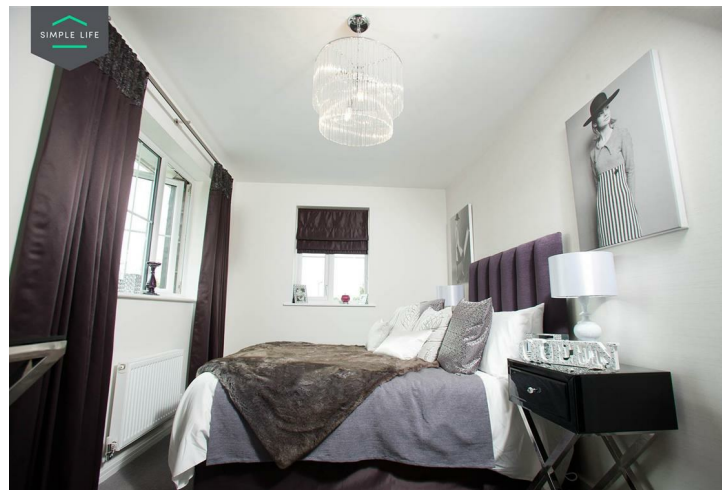
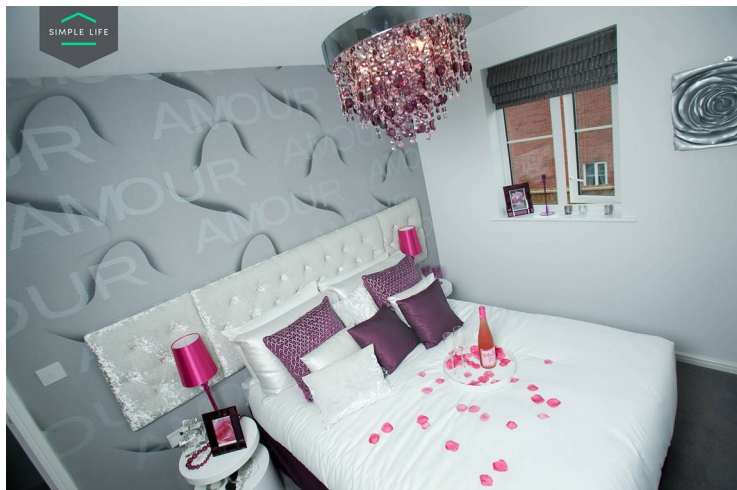
Educational needs are well catered for as the development is within a few miles from Outstanding and Good Ofsted rated schools, including Blackburn the Redeemer CofE Primary, Audley Junior School and Newfield School.

To access the development, please use postcode BB2 3TZ.

Deposit £1220  
Holding Deposit £240  
Unfurnished  
Council Tax C  
Available 23rd February 2026







## Key Features

- Car Parking Space
- Dishwasher
- Washing machine
- Carpets up the stairs and in the bedrooms
- Private back garden
- Security Alarm
- Fridge-freezer
- Modern kitchen worktops and units
- Wood-effect flooring in the kitchen

## Location

